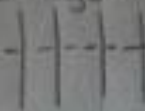


Trail Pattern

* Those that are doing In-Hand or walk/trot, trot where it says Canter



Once letter is returned, pick up a trot and trot over logs.



Stop and show Judge the letter
wait to mailbox

pick up the right lead and corner around the barrel to the pinwheel.



walk the pinwheel as shown on the diagram.

When pinwheel is completed, pick up a trot to the gate



stop and work gate with your left hand



Back your horse/pony/minis thru the shoot

Stop and perform a 270° turn to the right

Pick up a left lead & corner the four legs are even with cone.

Pick up a trot the serpentine cones



wait to and over the bridge

Finish