

Flint Leverage Points Project

Partnership: a community-based research project to better **understand the food system in Flint, Michigan**

[Community Foundation of Greater Flint](#) (CFGF)

[Michigan State University](#) (MSU)

Community Consultative Panel (CCP)

with faith leaders, community activists, government leaders, and leaders in non-profit organizations aiming to improve food access for Flint residents

From 2018—2023: gather community voices and experiences about **Flint food**.



Urban Food Systems in Flint, Michigan: Identifying Leverage Points

Participate In Research

Project Updates

Resources In Flint

Resources And Publications

Contact Us



Home / Resources and Publications /

Resources and Publications



Data Collection: Flint Leverage Points Project

<https://www.canr.msu.edu/flintfood/>

Resources and Publications

Briefing Notes

Tools

Timeline

Values for the Flint Food System

Photo Project

Grocery & Transportation Maps

Key Lessons: Synthesizing Research Results

Scenarios for the Future of the Flint Food System: Visions for 2042

Flint Food System Video

Project Publications

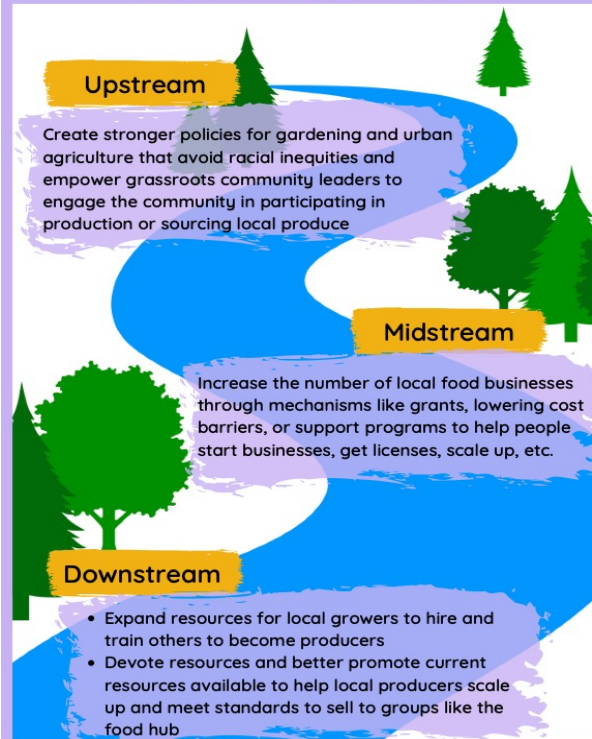
Research Presentations



4 Key Findings Graphic Summaries

Desirable Future: Drawing on the many assets within our community, future economic investment results in Flint-based ownership within the food system. Economic development fosters cultural growth, is culturally appropriate and improves quality of life for all residents.

Example leverage points defined by community members are listed below. Join the conversation--detailed lists of more leverage points can be found at: www.canr.msu.edu/FlintFood



Currently: Economic investment heavily focuses on emergency food distribution rather than preventing need. Jobs are low-paying and ownership of the food system lies with people outside of Flint.

Definitions:

Upstream: Policies, laws, or regulations that improve community conditions, creating system-wide changes

Midstream: Barriers that need to be addressed in order for the system to evolve; and/or supports individual social needs

Downstream: Addresses individual needs and crisis management

Learn more at: www.canr.msu.edu/FlintFood

Urban Food Systems in Flint, Michigan: Identifying Leverage Points

Participate In Research

Project Updates

Resources In Flint

Resources And Publications

Contact Us



 / Resources and Publications /

Resources and Publications



Data Collection: Flint Leverage Points Project

<https://www.canr.msu.edu/flintfood/>

Resources and Publications

Briefing Notes

Tools

Timeline

Values for the Flint Food System

Photo Project

Grocery & Transportation Maps

Key Lessons: Synthesizing Research Results

Scenarios for the Future of the Flint Food System: Visions for 2042

Flint Food System Video

Project Publications

Research Presentations

Flint and Genesee Food Policy Council

ABOUT US

HOW WE HELP

RESOURCES

RECIPES

NEWS

What is a Food Policy Council?

Rather than many separate advocates working alone on individual issues within a food system, food policy councils (FPC) create a platform for organized and unified action. FPC's bring together members of the community and stakeholders from different food-related sectors to examine how the food system is operating to develop suggestions and plans on how to improve it. Focus areas include the supply, quality, price, production, distribution, and consumption of food.

Our Mission

A network of food champions whose mission is to develop a resilient and reliable local food system rooted in community engagement, collaboration and education.

Our Vision

A robust and sustainable local food system that provides all Genesee County residents with affordable and healthy food.



FLINT & GENESEE
FOOD POLICY COUNCIL



Council website www.flintfoodcouncil.org



Meeting Schedule

Second Thursday of Each Month from 3:00 - 4:30 pm

Crim Office (452 Saginaw St) & Virtually via Zoom

Get Involved

Individual and public support for our food system is vital, as is having a coordinated group of individuals and organizations that share in the vision of a robust and sustainable local food system that provides all Genesee County residents with affordable and healthy food. We are in search of:

- Members of food-related sectors including but not limited to health, non-profit and advocacy organizations.
- Advocates of food access, economic development and food procurement.
- State or local government officials that want to shape public policy around food, improve coordination around existing programs and create new programs.
- Innovative ideas to improve the local food system, promote economic development and make the food system more sustainable and socially just.
- Individuals that value networking, sharing resources and information.
- Solutions land use issues, food labor rights and environmental issues, urban agriculture and food waste.

[JOIN THE FOOD POLICY COUNCIL](#)



FLINT & GENESEE FOOD POLICY COUNCIL

Membership Interest Form

Member interest form for the Flint and Genesee Food Policy Council. For more information visit FlintFoodCouncil.org

The direct link for the member interest form is https://docs.google.com/forms/d/e/1FAIpQLSfr9hTCzdRWECjEJxaaBJ_aX8rCZhZLKT_MnKlk1j-N8JWe_Gg/viewform

Access it from the “Join the Food Policy Council” button on the website.



Questions?

For the Flint Leverage Points Project

Contact: Chelsea Wentworth at wentwo21@msu.edu

For the Flint and Genesee Food Policy Council

Contact: Kelly McClelland at mccle100@msu.edu

Or: flintfoodcouncil@gmail.com



Join Us!

From Research to Action

Join us on for the annual HFRCC Research Symposium, highlighting Flint-related research and exploring plans for moving forward in the era of COVID-19. Network with Flint researchers and community experts, engage with poster presenters, and learn from esteemed speakers and panelists.

REGISTER HERE



you're invited!

2023 RESEARCH SYMPOSIUM

FROM RESEARCH TO ACTION
BUILDING CAPACITY. BUILDING PARTNERSHIP

SEPTEMBER 29th
9:30 AM - 3:00 PM
Join us!

-  NETWORK!
-  ENGAGE!
-  LEARN!



Website: <https://www.hfrcc.org/> and direct link to register: https://umich.qualtrics.com/jfe/form/SV_71wWh4p13CJwBL0

