

CREP Prioritization: Mapping Sediment Loading Risk in the Saginaw Bay Basin

Background

Michigan State University Extension (MSUE) is collaborating with the State of Michigan and local stakeholders to re-establish the Conservation Reserve Enhancement Program (CREP) in Michigan. To aid in prioritizing lands eligible for CREP enrollment, the Institute of Water Research (IWR) at MSU developed township-scale maps of sediment loading risk for the Saginaw Bay basin. This book organizes those maps at the township scale.

Data

The maps are based upon data from the United States Geological Survey's (USGS) SPATIally Referenced Regression On Watershed attributes (SPARROW) model*. The model uses observations, land use characteristics, and statistical relationships, among other variables, to estimate pollutant loads to streams and rivers. The data in this map book represents incremental sediment load contribution for each small catchment in the basin (see image at right), i.e. the amount of sediment load that originated in a particular area (not the total, accumulated amount moving through the stream in that area).

Contacts

Please direct questions about MSUE's project to:

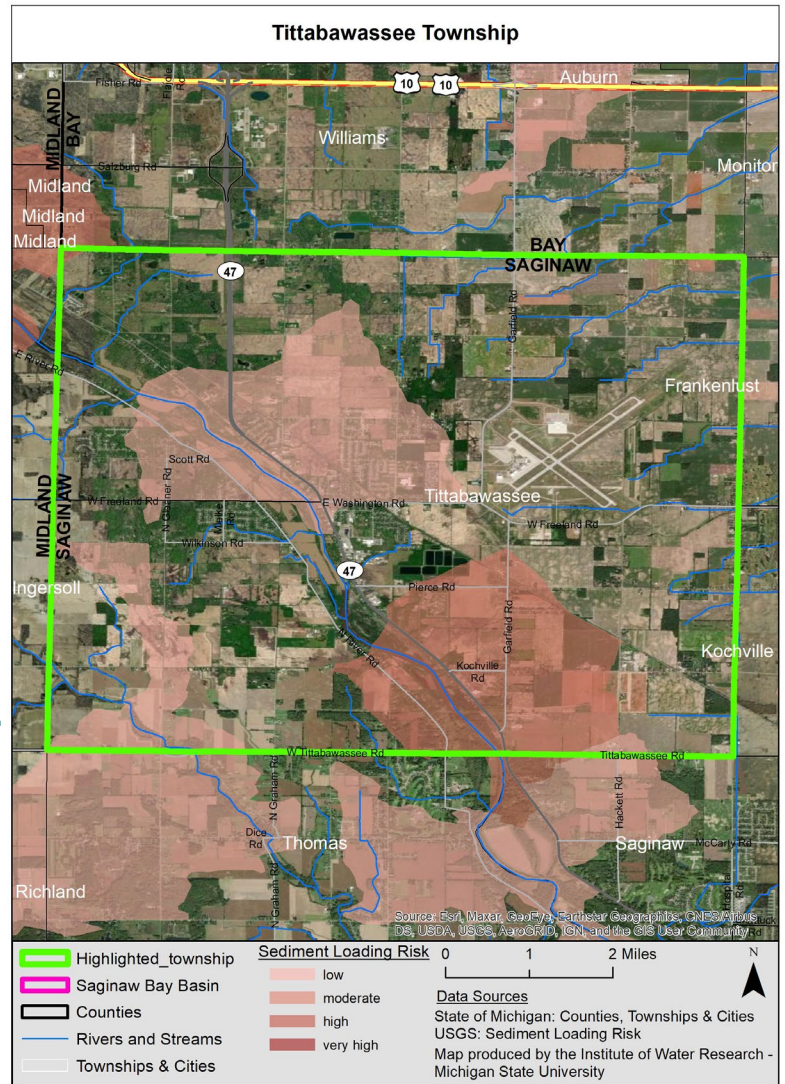
Sarah Fronczak

Environmental Management Educator
Michigan State University Extension
froncz3@msu.edu

Please use the URL below to learn more about the SPARROW model, and direct questions about the maps to:

Glenn O'Neil

Environmental Scientist
Institute of Water Research - Michigan State University
oneilg@msu.edu

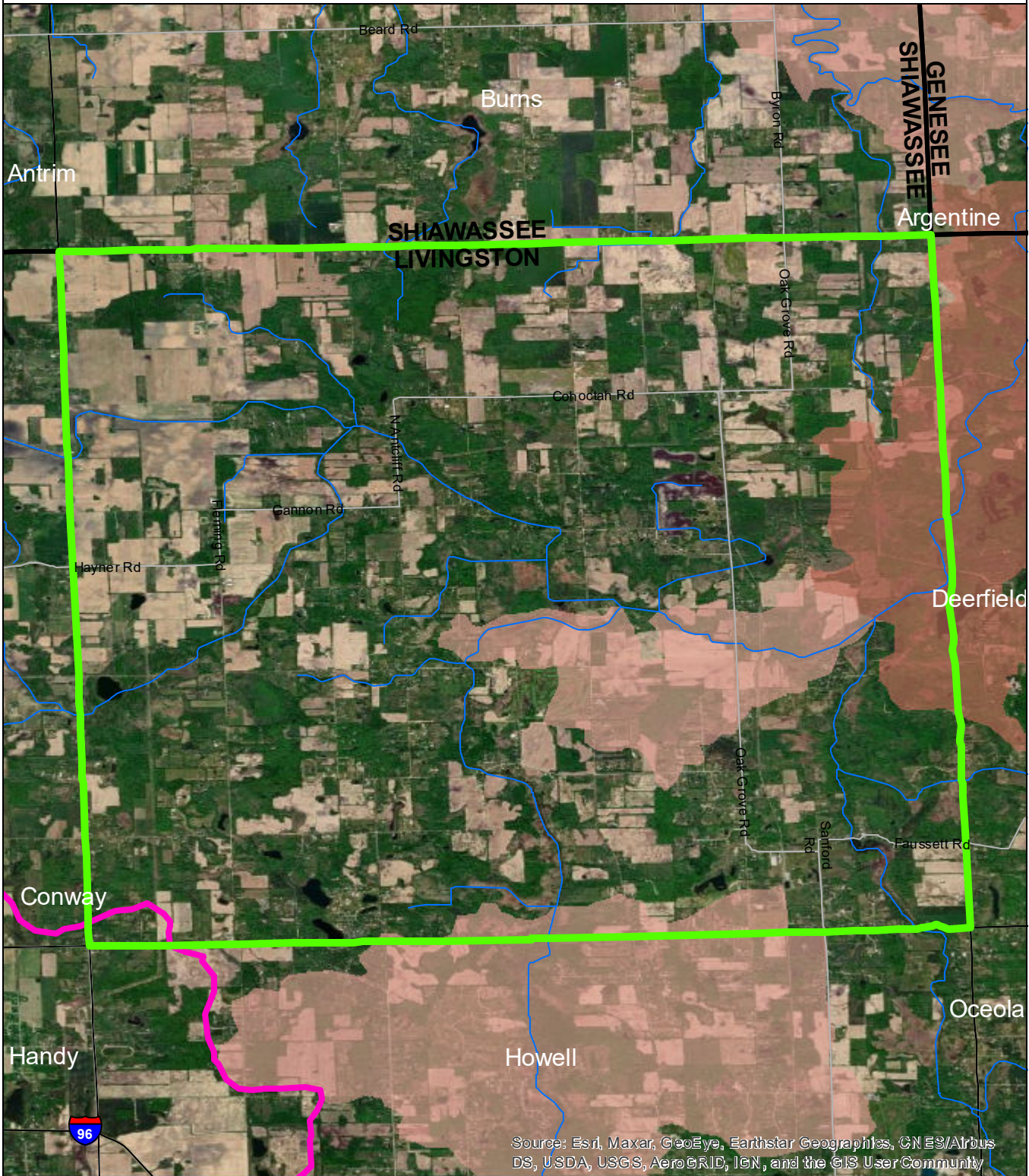


* <https://www.sciencebase.gov/catalog/item/5cbf5150e4b09b8c0b700df3>

Table of Contents

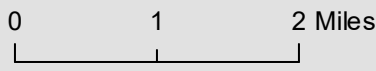
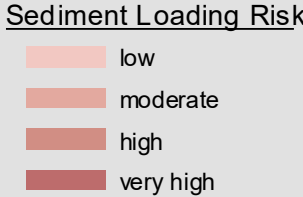
Cohoctah Township	3
Conway Township	4
Deerfield Township	5
Genoa Township	6
Hartland Township	7
City of Howell	8
Howell Township	9
Marion Township	10
Oceola Township	11
Tyrone Township	12

Cohoctah Township



Source: Esri, Maxar, GeoEye, Earthstar Geographics, CN ES/Airbus DS, USDA, USGS, AeroGRID, IGN, and the GIS User Community

- Cohoctah Township
- Saginaw Bay Basin
- Counties
- Rivers and Streams
- Townships & Cities



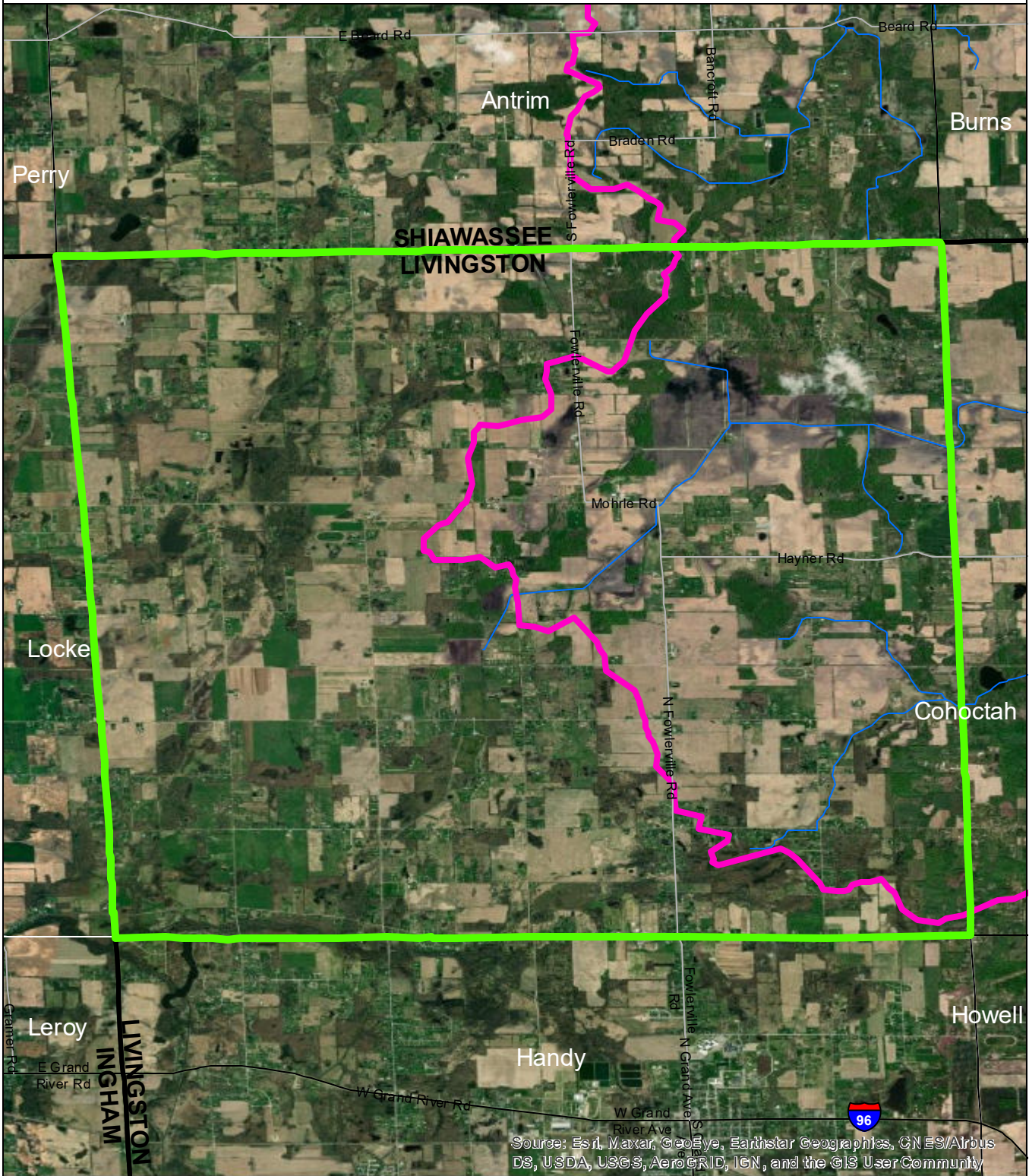
Data Sources

State of Michigan: Counties, Townships & Cities
 USGS: Sediment Loading Risk

Map produced by the Institute of Water Research - Michigan State University



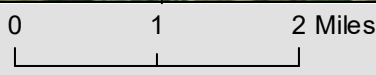
Conway Township



- Conway Township
- Saginaw Bay Basin
- Counties
- Rivers and Streams
- Townships & Cities

Sediment Loading Risk

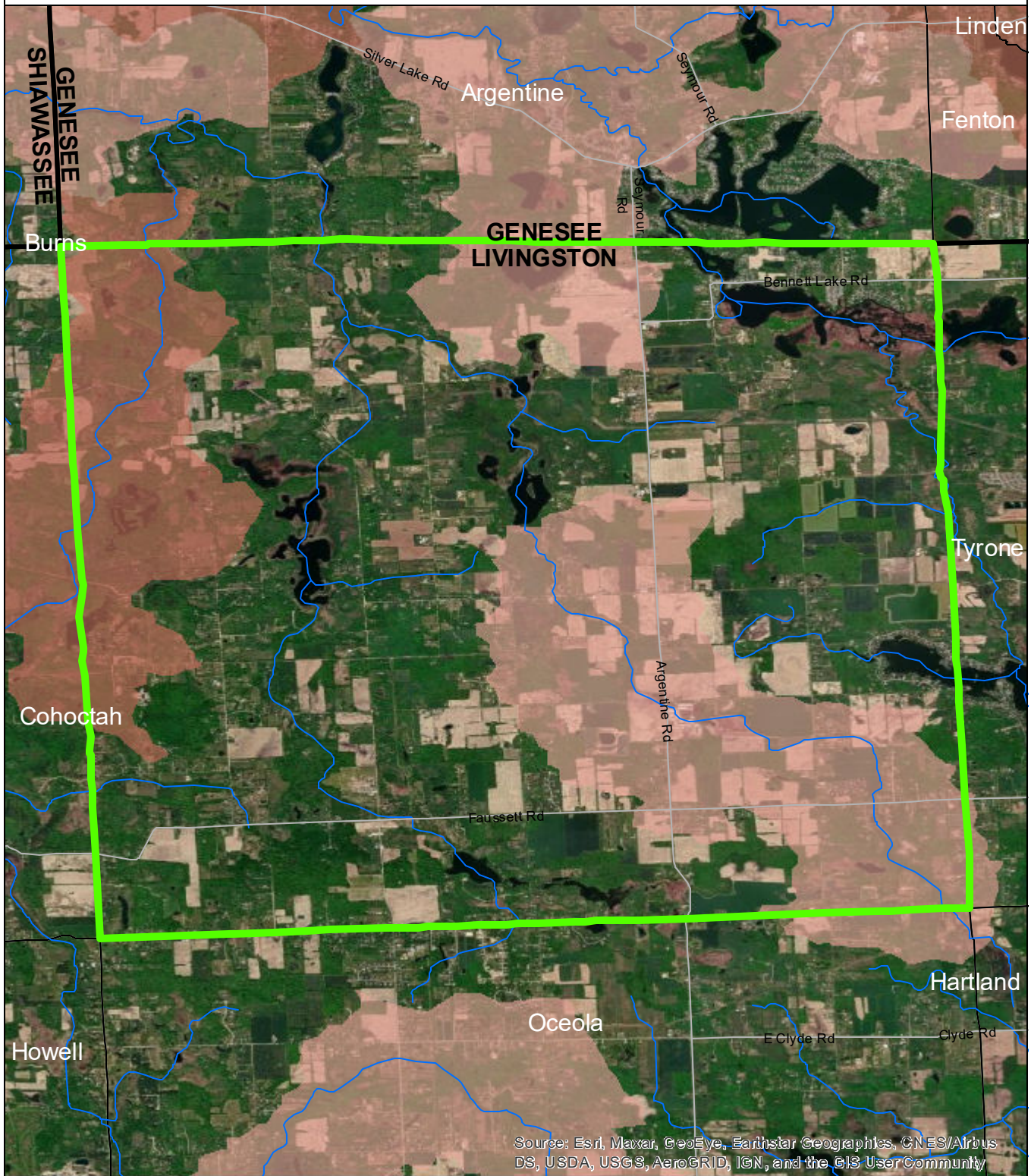
- low
- moderate
- high
- very high



Data Sources

State of Michigan: Counties, Townships & Cities
 USGS: Sediment Loading Risk
 Map produced by the Institute of Water Research - Michigan State University

Deerfield Township

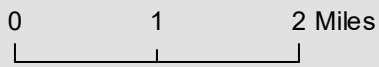


Source: Esri, Maxar, GeoEye, Earthstar Geographics, CNES/Airbus DS, USDA, USGS, AeroGRID, IGN, and the GIS User Community

- Deerfield Township
- Saginaw Bay Basin
- Counties
- Rivers and Streams
- Townships & Cities

Sediment Loading Risk

- low
- moderate
- high
- very high



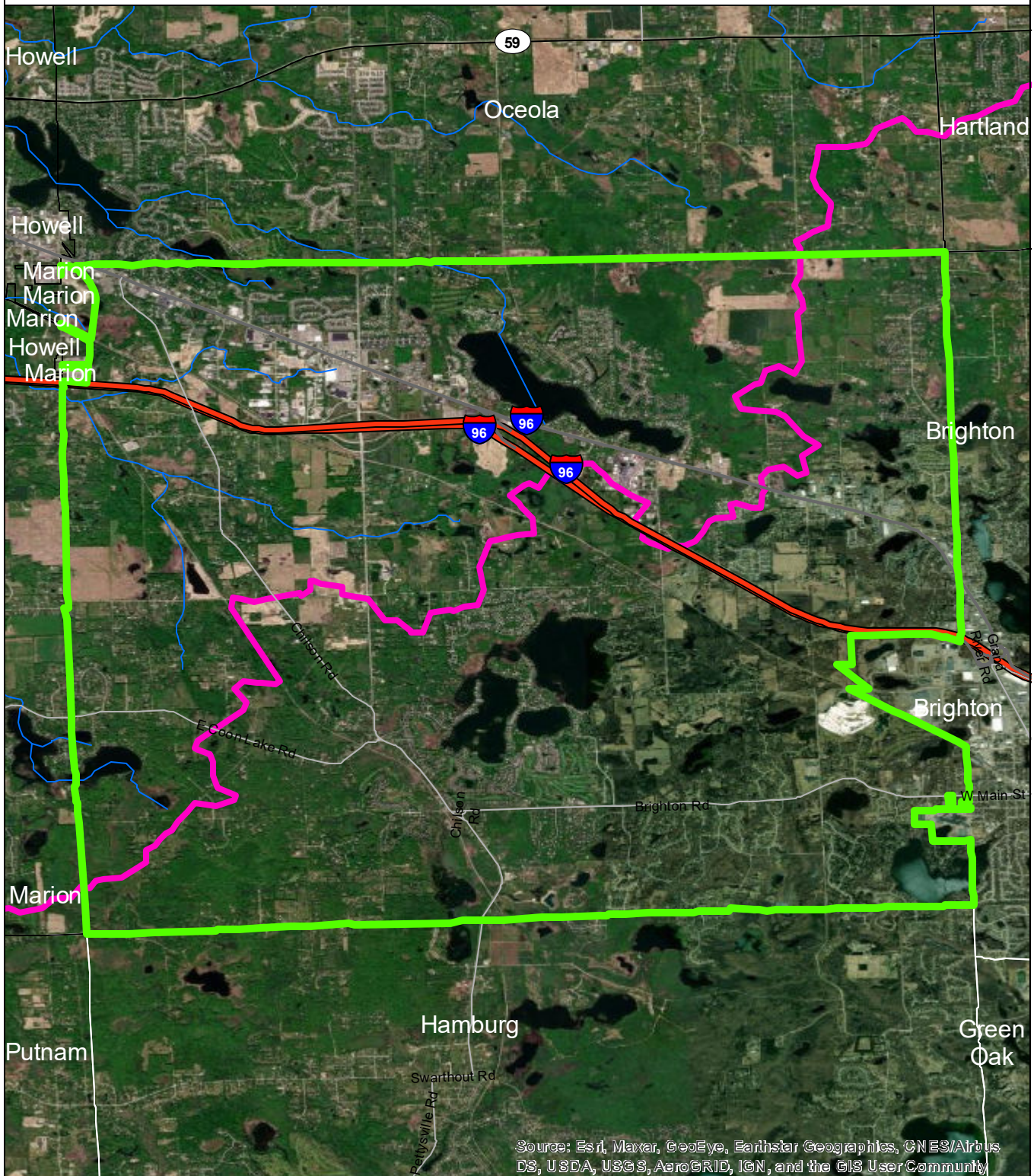
Data Sources

State of Michigan: Counties, Townships & Cities
 USGS: Sediment Loading Risk

Map produced by the Institute of Water Research - Michigan State University



Genoa Township



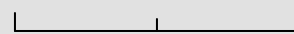
Source: Esri, Maxar, GeoEye, Earthstar Geographics, CNES/Airbus DS, USDA, USGS, AeroGRID, IGN, and the GIS User Community

- Genoa Township
- Saginaw Bay Basin
- Counties
- Rivers and Streams
- Townships & Cities

Sediment Loading Risk

- low
- moderate
- high
- very high

0 1 2 Miles



Data Sources

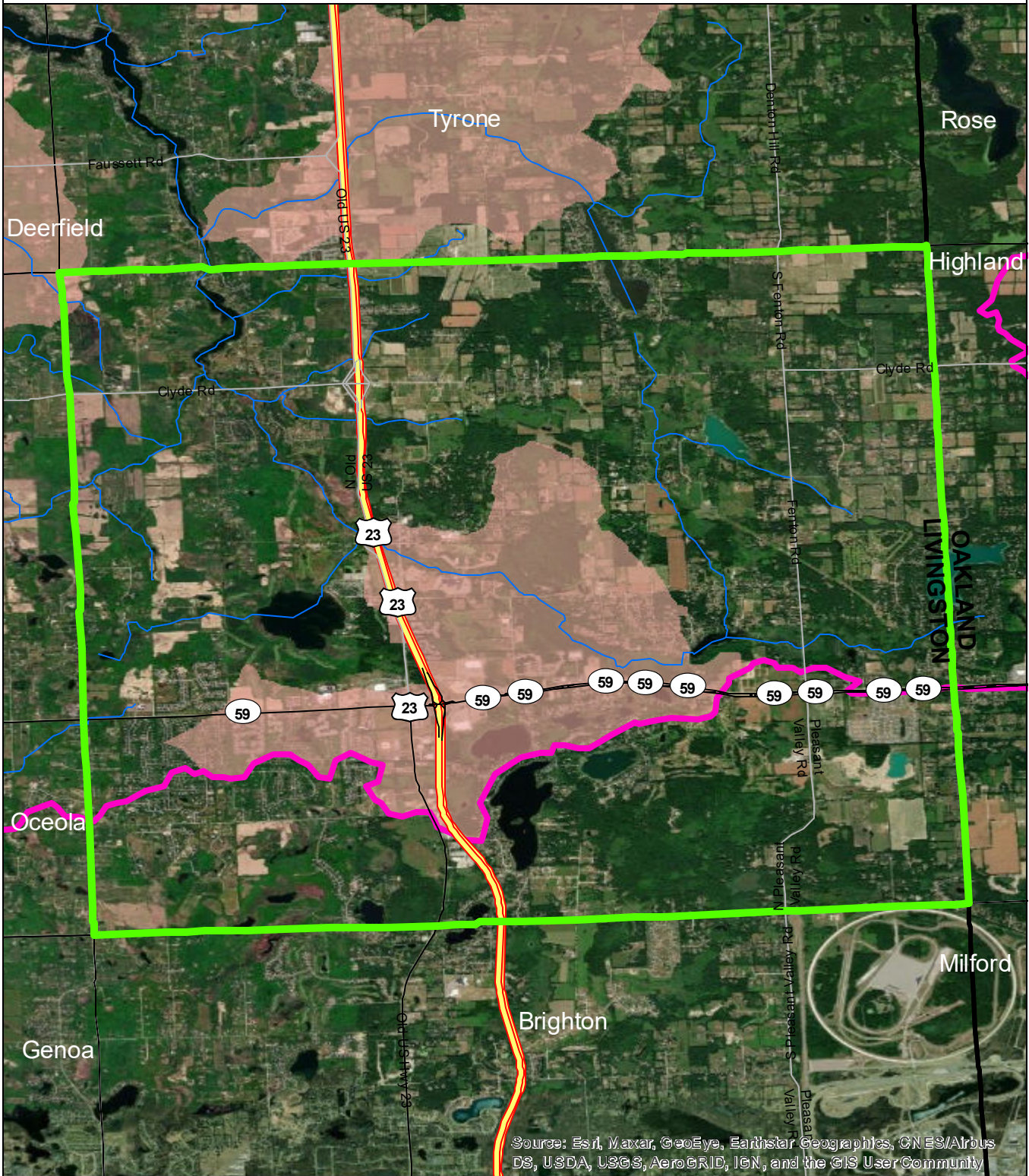
State of Michigan: Counties, Townships & Cities

USGS: Sediment Loading Risk

Map produced by the Institute of Water Research - Michigan State University



Hartland Township

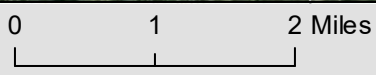


Source: Esri, Maxar, GeoEye, Earthstar Geographics, CNES/Airbus DS, USDA, USGS, AeroGRID, IGN, and the GIS User Community

- Hartland Township
- Saginaw Bay Basin
- Counties
- Rivers and Streams
- Townships & Cities

Sediment Loading Risk

- low
- moderate
- high
- very high

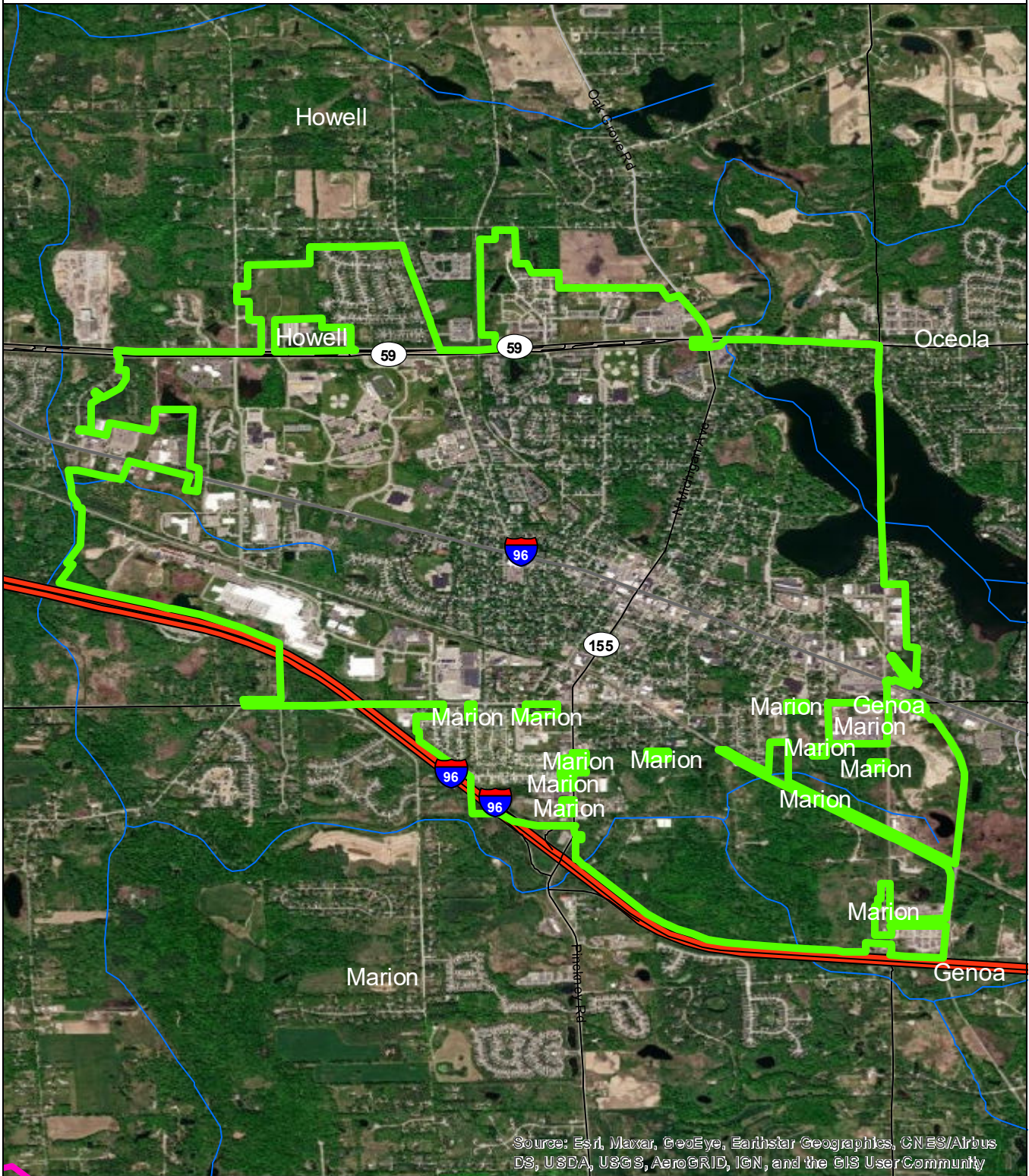


Data Sources

State of Michigan: Counties, Townships & Cities
 USGS: Sediment Loading Risk
 Map produced by the Institute of Water Research - Michigan State University



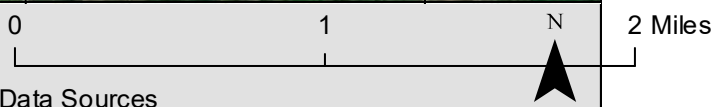
City of Howell



Source: Esri, Maxar, GeoEye, Earthstar Geographics, CNES/Airbus DS, USDA, USGS, AeroGRID, IGN, and the GIS User Community

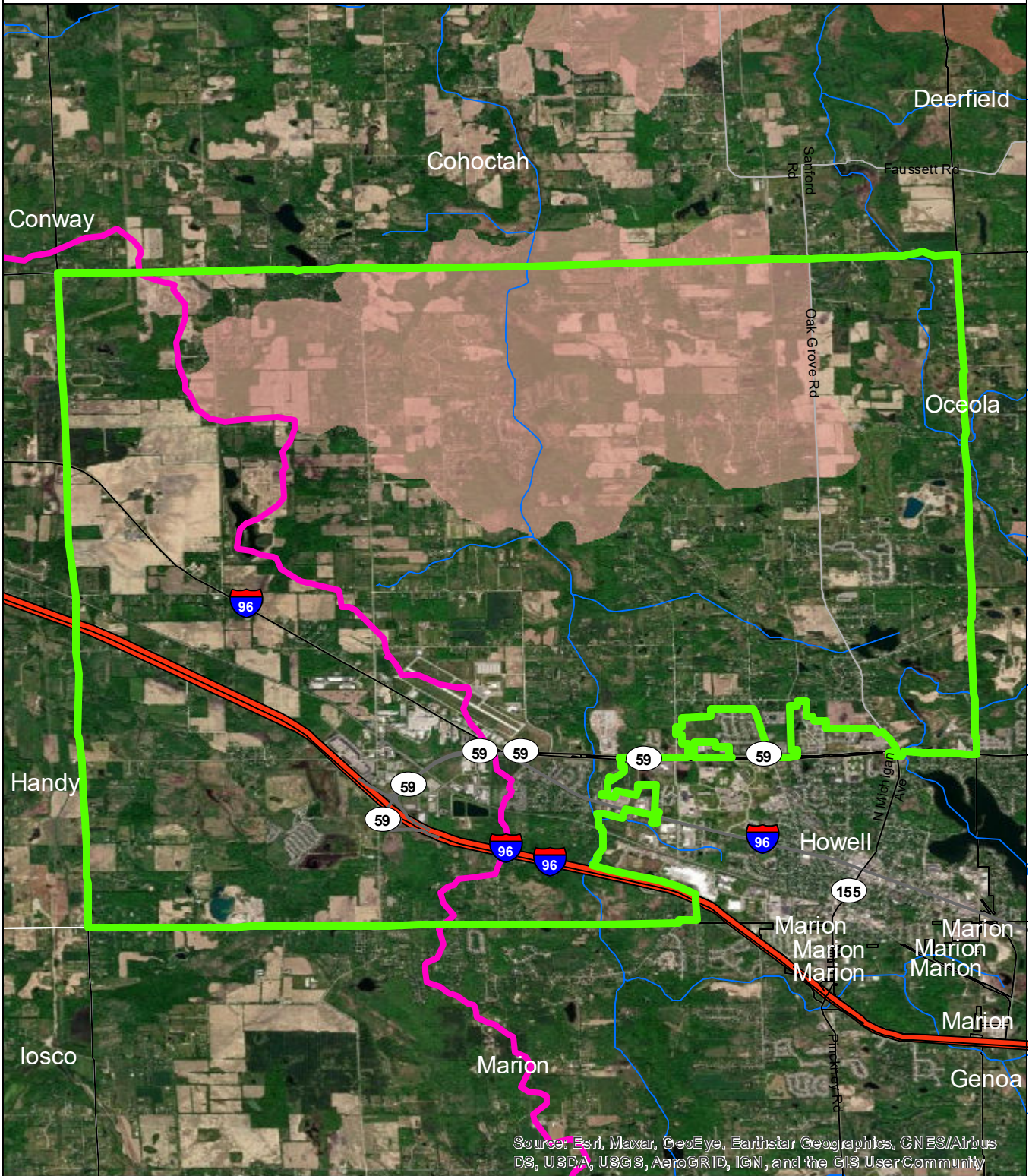
- City of Howell
- Saginaw Bay Basin
- Counties
- Rivers and Streams
- Townships & Cities

- Sediment Loading Risk**
- low
 - moderate
 - high
 - very high



Data Sources
 State of Michigan: Counties, Townships & Cities
 USGS: Sediment Loading Risk
 Map produced by the Institute of Water Research - Michigan State University

Howell Township

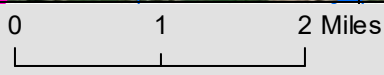


Source: Esri, Maxar, GeoEye, Earthstar Geographics, CNES/Airbus DS, USDA, USGS, AeroGRID, IGN, and the GIS User Community

- Howell Township
- Saginaw Bay Basin
- Counties
- Rivers and Streams
- Townships & Cities

Sediment Loading Risk

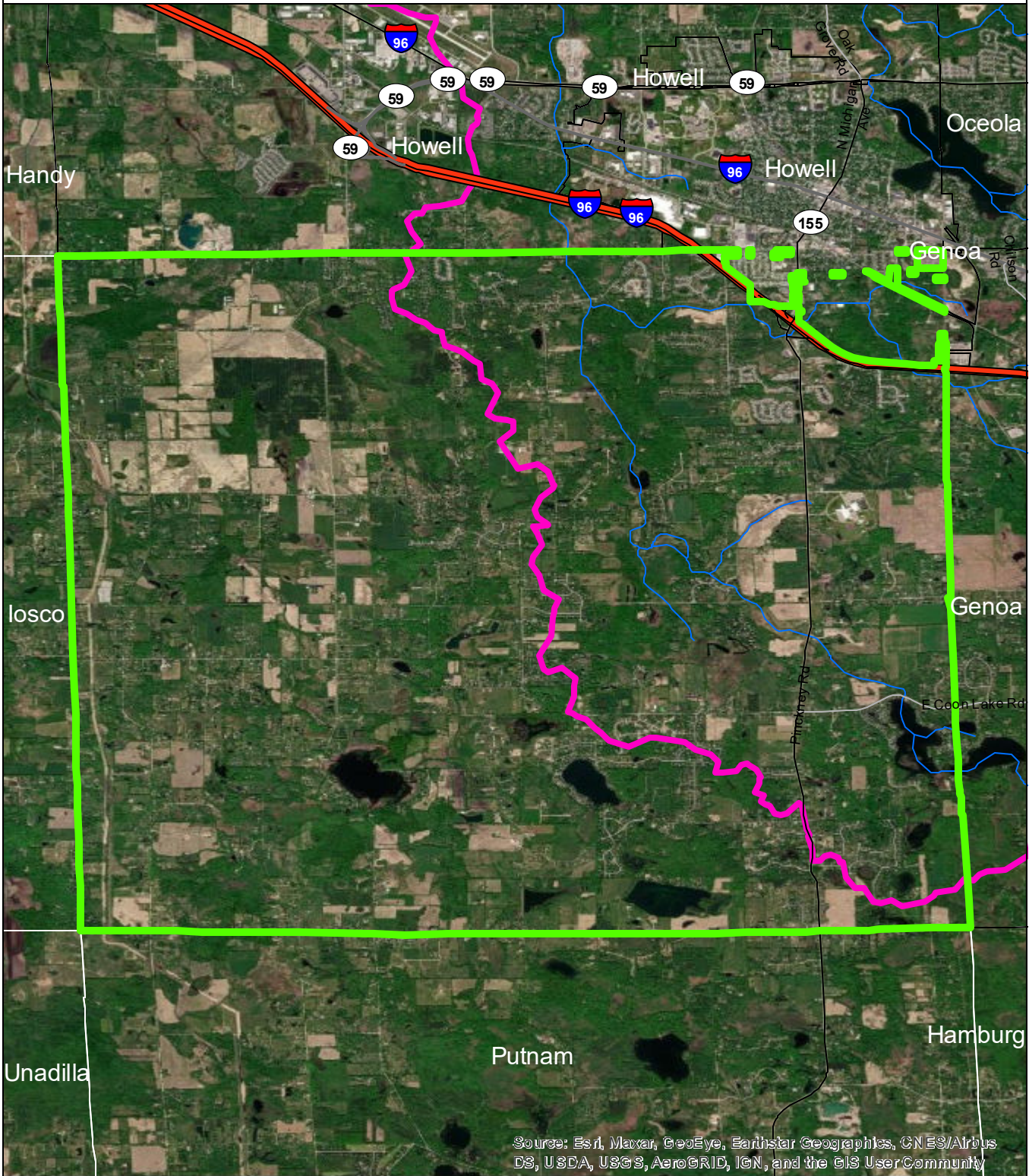
- low
- moderate
- high
- very high



Data Sources

State of Michigan: Counties, Townships & Cities
 USGS: Sediment Loading Risk
 Map produced by the Institute of Water Research - Michigan State University

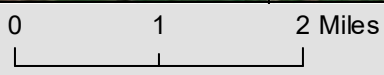
Marion Township



Source: Esri, Maxar, GeoEye, Earthstar Geographics, CNES/Airbus DS, USDA, USGS, AeroGRID, IGN, and the GIS User Community

- Marion Township
- Saginaw Bay Basin
- Counties
- Rivers and Streams
- Townships & Cities

- Sediment Loading Risk**
- low
 - moderate
 - high
 - very high

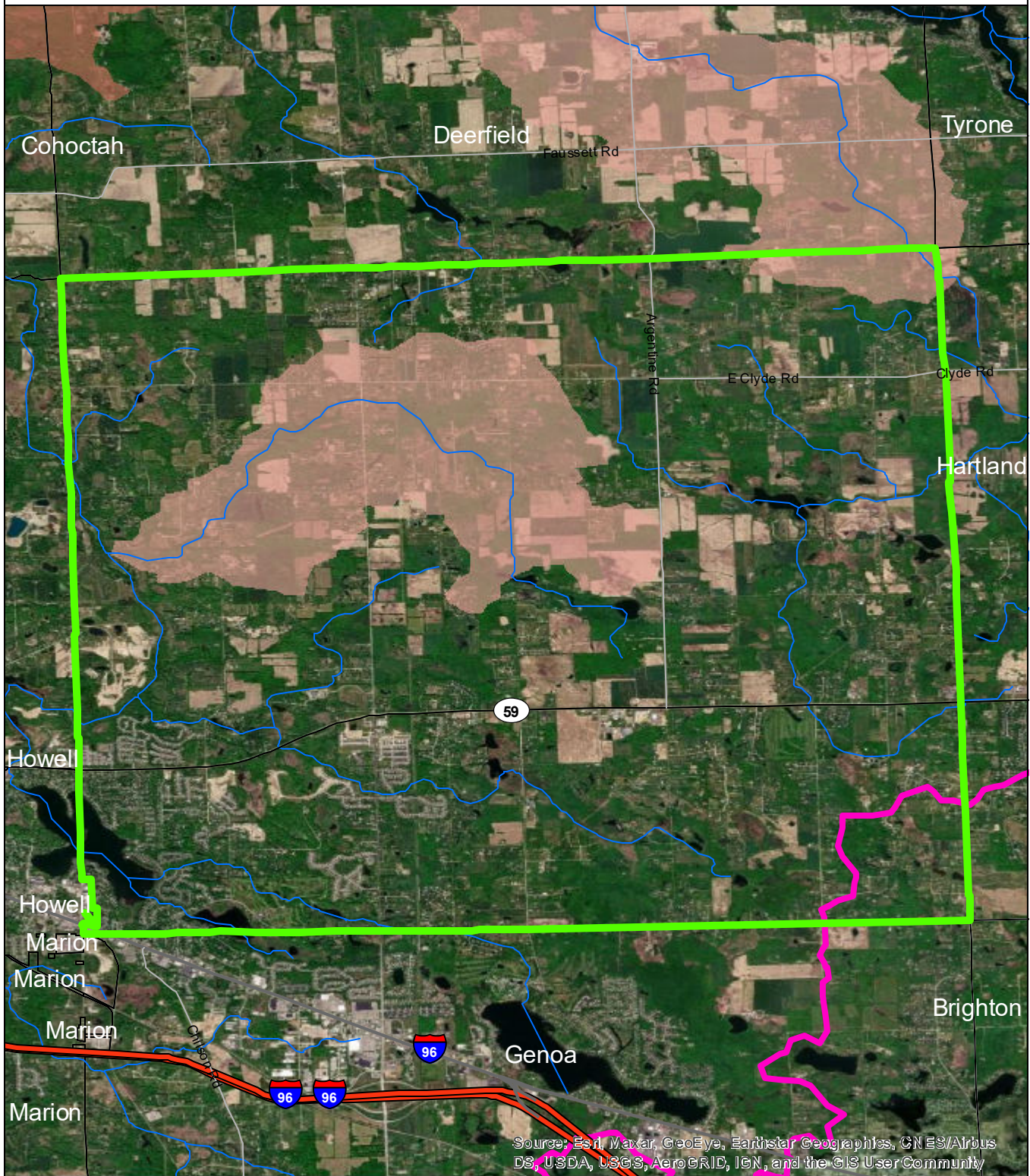


Data Sources

State of Michigan: Counties, Townships & Cities
 USGS: Sediment Loading Risk
 Map produced by the Institute of Water Research - Michigan State University



Oceola Township

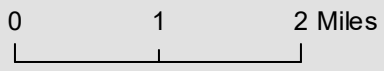


Source: Esri, Maxar, GeoEye, Earthstar Geographics, CNES/Airbus DS, USDA, USGS, AeroGRID, IGN, and the GIS User Community

- Oceola Township
- Saginaw Bay Basin
- Counties
- Rivers and Streams
- Townships & Cities

Sediment Loading Risk

- low
- moderate
- high
- very high



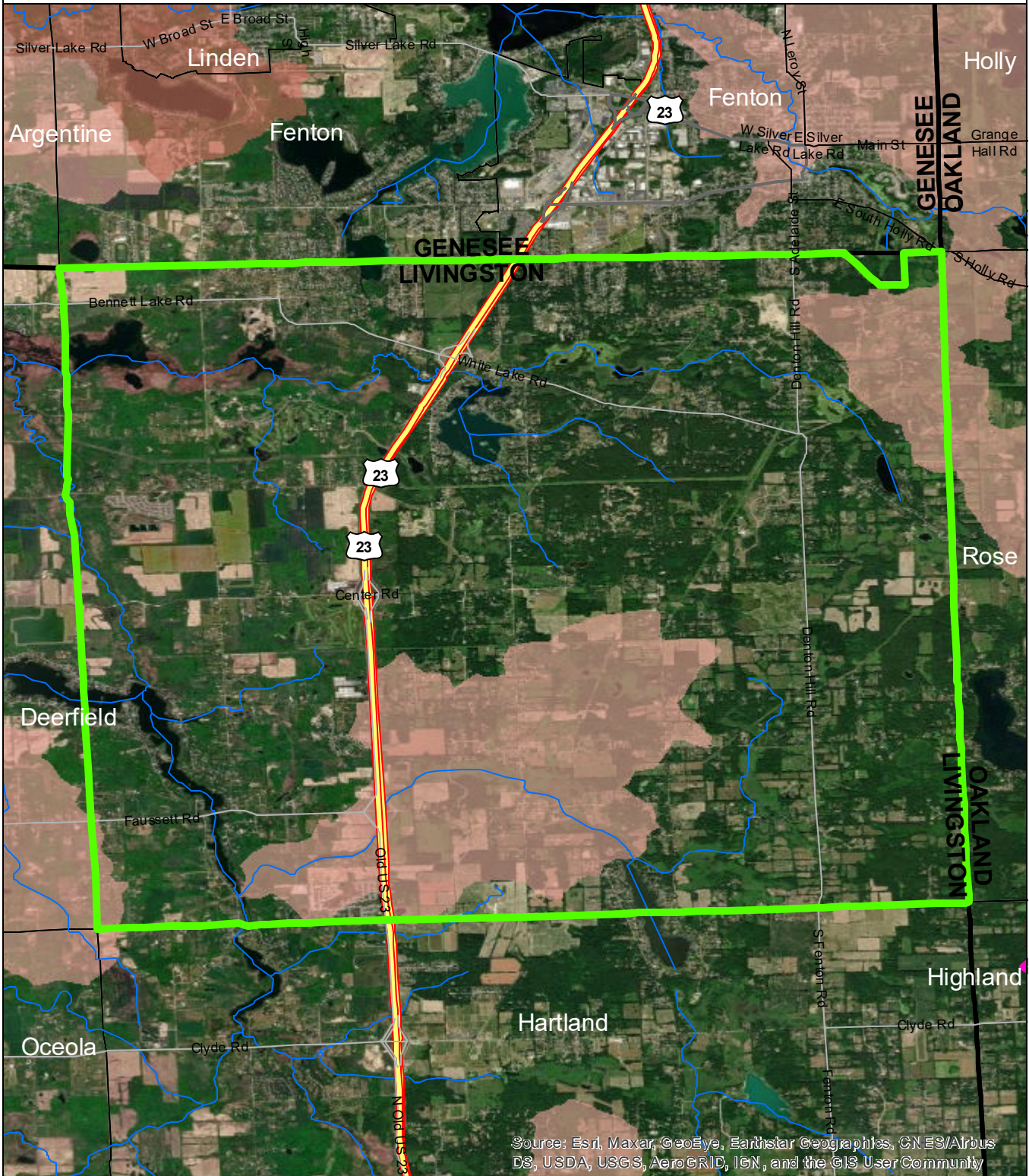
Data Sources

State of Michigan: Counties, Townships & Cities
 USGS: Sediment Loading Risk

Map produced by the Institute of Water Research - Michigan State University

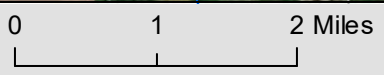
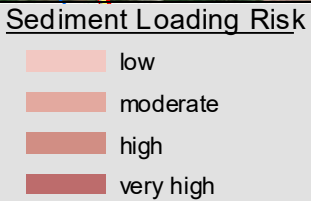


Tyrone Township



Source: Esri, Maxar, GeoEye, Earthstar Geographics, CNES/Airbus DS, USDA, USGS, AeroGRID, IGN, and the GIS User Community

- Tyrone Township
- Saginaw Bay Basin
- Counties
- Rivers and Streams
- Townships & Cities



Data Sources

State of Michigan: Counties, Townships & Cities
 USGS: Sediment Loading Risk
 Map produced by the Institute of Water Research - Michigan State University

