



Forest Carbon and Climate Program
Department of Forestry
MICHIGAN STATE UNIVERSITY



State and Tribal Capacity Building on Forest Carbon

Forest Carbon and Climate Change in Iowa

These technical briefings summarize topics such as forest densities and cover types, carbon storage, and climate considerations for states in the Eastern United States.

This technical briefing is a product of the Forest Carbon and Climate Program (FCCP), Department of Forestry, Michigan State University. Briefing content was co-developed with the Northern Institute of Applied Climate Science (NIACS), a collaborative, multi-institutional partnership led by the USDA Forest Service. This briefing was made possible through funding from the Penn Soil Resource Conservation and Development Council under a cooperative agreement with the USDA Forest Service.



The content of this technical briefing is the product of the State and Tribal Capacity Building on Forest Carbon webinar and workshop series that occurred from December 2023 – July 2024. The series sought to support state and tribal forestry agencies in various stages of working on forest carbon management and stewardship efforts through webinars, interactive in-person learning, and print materials. The project developed four webinars focusing on numerous aspects of forest and carbon in the Eastern US helping participants develop the tools to assess potential trade-offs and opportunities in forest management and planning. In addition to the four webinars, participants were invited to participate in two in-person workshops to delve deeper into technical topics of forest carbon including forest inventorying, forest carbon models, stakeholder perceptions, and communication tactics for both internal and external audiences. For more information please visit:

<https://www.canr.msu.edu/socioeconomics/Workshops/Carbon-Capacity>

Published December 2024

Authors:

Chad Papa, research assistant, Forest Carbon and Climate Program, Department of Forestry, Michigan State University

Daphna Gadoth-Goodman, senior research assistant, Forest Carbon and Climate Program, Department of Forestry, Michigan State University

Patricia Leopold, climate adaptation specialist, Northern Institute of Applied Climate Science & State, Tribal, and Private Forestry, USDA Forest Service, Eastern Region

Anna Heise, communications assistant, Forest Carbon and Climate Program, Department of Forestry, Michigan State University

Suggested Citation: FCCP. (2024). State and Tribal Capacity Building on Forest Carbon Series: Forest Carbon and Climate Change in Iowa. *Technical Briefing*. Forest Carbon and Climate Program, Department of Forestry, Michigan State University. East Lansing, Michigan. Available at:

<https://www.canr.msu.edu/socioeconomics/Workshops/Carbon-Capacity/technical-briefings>

Funding for this project was provided by the USDA Forest Service, Eastern Region. USDA is an equal opportunity provider, employer, and lender

Cover Photo: Kayla Ihrig on https://unsplash.com/@kayla_ih; Cover image: MSU FCCP

Table of Contents

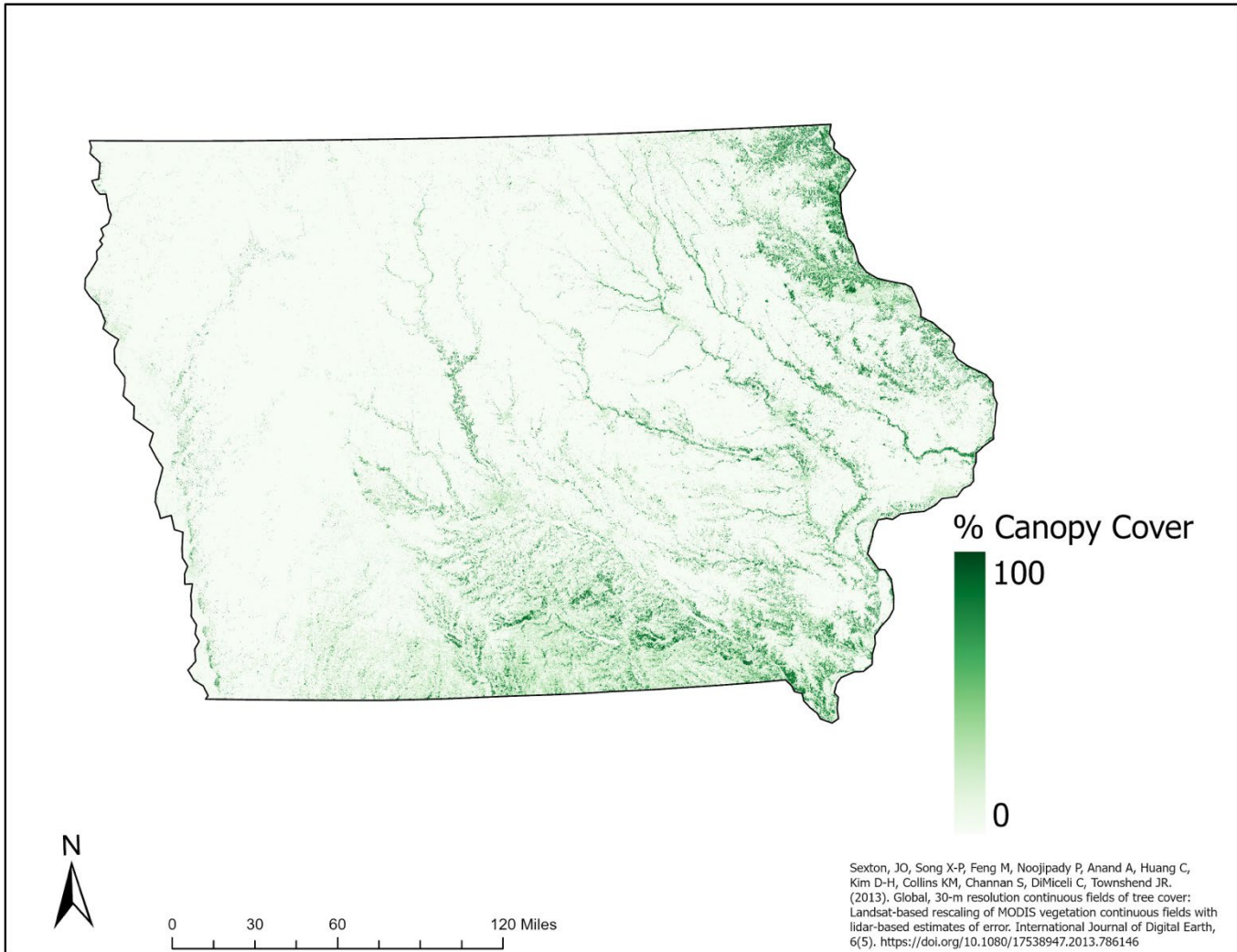
Iowa Forest Overview	3
Temperature and Precipitation	4
Projected Future Trends in Temperature/Precipitation	5
Forest Density	6
Forest Cover Types and Carbon.....	7
Forest Carbon Pools	8
Forest Carbon Density	9
Species-Specific Climate Considerations	10
<i>Habitat Suitability and Migration Models</i>	11
<i>Adaptability Ratings</i>	12
<i>Climate Change Atlas Summary for Red Oak</i>	12
Citations:	13
<i>Data Sources</i> :.....	13
<i>Habitat suitability models on trees</i> :	13
<i>Adaptability of tree species</i> :	13
<i>Climate summary definitions</i> :.....	13

Iowa Forest Overview

Iowa is situated in the Midwest region of the United States and lies within the US Forest Service's Eastern Region (USFS Region 9). Bordering states include South Dakota and Nebraska to the west, Minnesota to the north, Wisconsin and Illinois to the east, and the Missouri state line marking Iowa's southern boundary.

A map of percent tree canopy cover in Iowa is shown in **Figure 1**. This state has low levels of forest cover across much of its extent, with most forests occurring along major river systems including the Des Moines, Iowa, and Cedar Rivers, as well as along the Mississippi River lining Iowa's eastern boundary. Areas with the most forest cover include the northeastern and south-central portions of the state.

Figure 1. Percent tree canopy cover in Iowa.



Temperature and Precipitation

Two major factors affecting forest carbon and productivity are temperature and precipitation. **Figure 2** shows normal mean temperatures throughout Iowa between 1991 and 2020. Over this 30-year period, mean annual temperatures varied by about 9 °F across this state. Temperature trends largely follow latitudinal gradients, with warmer mean temperatures occurring in the southernmost portions of the state and giving way to cooler temperatures to the north. The warmest mean annual temperature is around 53 °F and occurs in the southeast corner of Iowa, while the coolest mean annual temperature is around 44 °F occurring across the state's northern boundary.

Figure 2. Normal mean temperature (°F) from 1991–2020 in Iowa

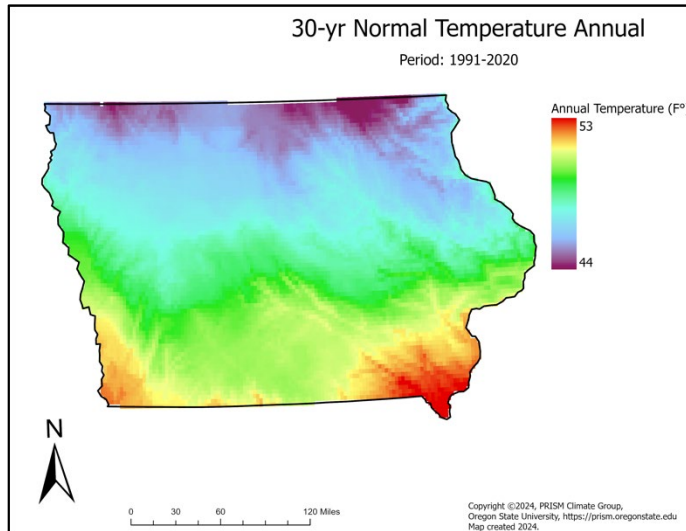


Figure 3. Normal mean precipitation (in.) from 1991-2020 in Iowa.

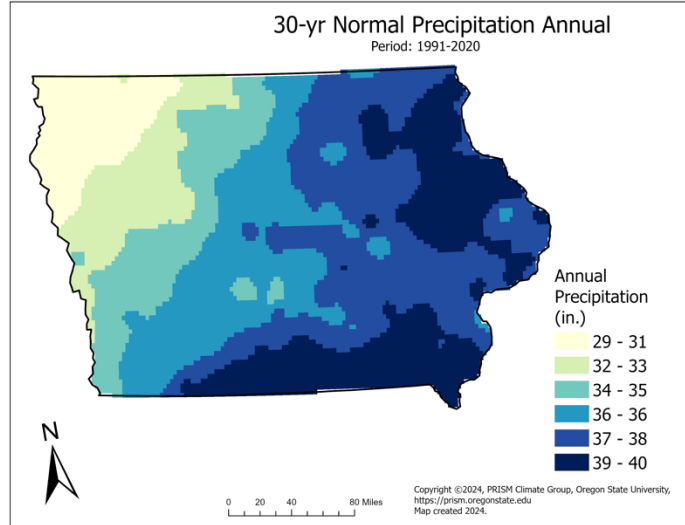


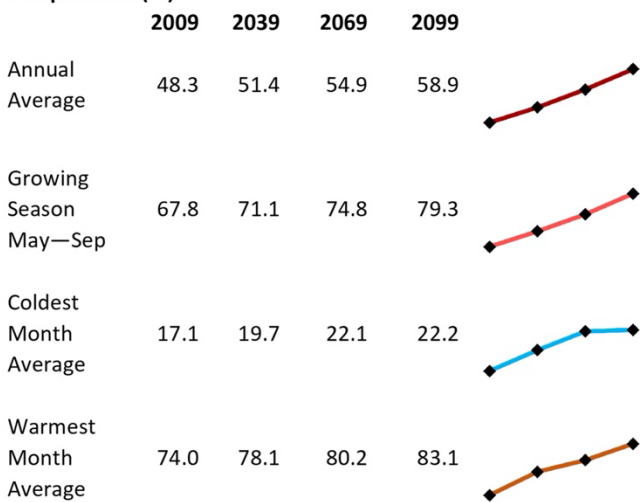
Figure 3 shows normal mean precipitation throughout Iowa between 1991 and 2020 and demonstrates the geographic variation in these trends. Over this 30-year period, mean annual precipitation levels varied by about 11 in. The northwest corner of the state receives the lowest levels of precipitation (29-31 in.), and grades into areas with the highest amounts of precipitation (39-40 in.), which occur in the northeast and along Iowa's southern border.

Projected Future Trends in Temperature/Precipitation

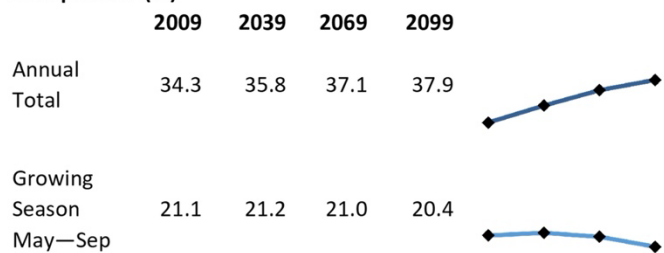
Figure 4. Model results for potential changes in temperature and precipitation trends in Iowa through 2099.

Potential Changes in Climate Variables

Temperature (°F)



Precipitation (in)



NOTE: For the six climate variables, four 30-year periods are used to indicate six potential future trajectories. The period ending in 2009 is based on modeled observations from the PRISM Climate Group and the three future periods were obtained from the NASA NEX-DCP30 dataset. Future climate projections show estimates of each climate variable within the region for the average of the CCSM4, GFDL CM3, and HADGEM2-ES models under RCP 8.5 emission scenario. The average value for the region is reported, even though locations within the region may vary substantially based on latitude, elevation, land-use, or other factors.

Citation: Iverson, L.R.; Prasad, A.M.; Peters, M.P.; Matthews, S.N. 2019. Facilitating Adaptive Forest Management under Climate Change: A Spatially Specific Synthesis of 125 Species for Habitat Changes and Assisted Migration over the Eastern United States. *Forests*. 10(11): 989. <https://doi.org/10.3390/f10110989>

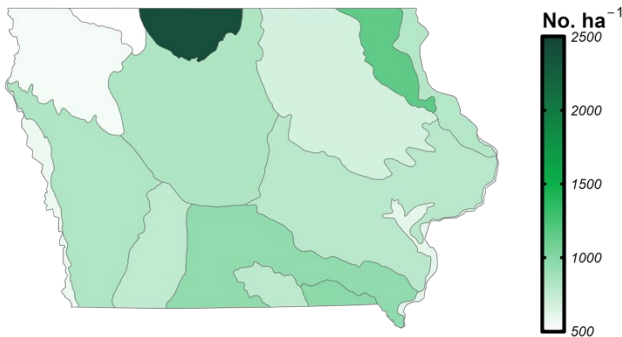
Projected future trends in temperature and precipitation for Iowa between 4 time periods (timeframes in graphic span from 1980-2009, 2010-2039, 2040-2069, and 2070-2099) are shown in **Figure 4**. Model results suggest average temperatures will continue to increase through the end of the century, a trend which is also projected for the coldest and warmest month averages, as well as throughout the growing season (May – Sep.). During this period, average annual temperatures are expected to increase by an estimated 10.6 °F, with the most drastic increases expected to occur during the growing season (+11.5 °F).

Model results of future precipitation in Iowa show interesting trends, with annual totals projected to steadily increase through 2099 (**Figure 4**). Over this period, annual precipitation is expected to increase by an estimated 3.6 in., however, precipitation levels are projected to *decrease* during the growing season by an estimated 0.7 in. This suggests that precipitation in Iowa may increase substantially during the winter months (Oct. – Apr.), while drought events may become more frequent and severe during the growing season.

Forest Density

Figure 5. Forest density as live tree density (No. ha⁻¹) in Iowa.

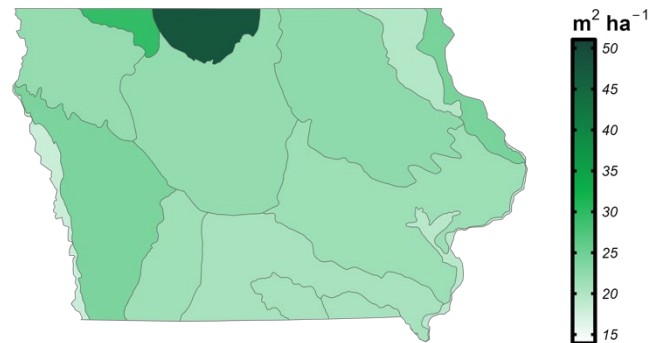
Forest Density: Live tree number



Data: USDA Forest Service, 2024

Figure 6. Forest density as live tree basal area (m² ha⁻¹) in Iowa.

Forest Density: Live tree basal area



Data: USDA Forest Service, 2024

Forest density¹ is both a structural characteristic of forests and a reflection of forest dynamics. It can be measured as the number of trees per unit area, or it can be measured in terms of timber by unit area, known as “basal area”. Live tree basal area represents the amount of ground covered by living trees in two-dimensional space. **Figure 5** shows average forest density in terms of live trees per hectare by ecoregion² across the state of Iowa, while **Figure 6** represents forest density by ecoregion in terms of basal area (m² ha⁻¹). By comparing these figures we can see that the ecoregion in the northwest corner of Iowa has a low forest density in terms of number of trees per hectare (**Figure 5**), but its density in terms of basal area (**Figure 6**) is similar to that of most other ecoregions in the state. This suggests that in this region, there may be fewer total trees per unit area, but on average, these trees tend to be relatively large. Meanwhile, there’s an ecoregion near the center of Iowa’s northern border which has a very high forest density in terms of both number of trees and basal area, suggesting a high overall forest density in this part of the state.

¹All forest inventory and carbon data were estimated using data from the Forest Inventory and Analysis (FIA) Program which can be accessed through the FIA DataMart (USDA Forest Service, 2024. *Forest inventory and analysis program*. Available at: <https://www.fia.fs.usda.gov/>) using the rFIA package (Stanke et al, 2020. rFIA: an R package for estimation of forest attributes with the US Forest Inventory and analysis database. *Environ Model Softw.* 127:104664. <https://doi.org/10.1016/j.envsoft.2020.104664>) in the R programming environment (R Core Team, 2020. *R: A language and environment for statistical computing*, Vienna, Austria: R Foundation for Statistical Computing.

²Ecoregion definition can be found at Cleland et al, 2007. Ecological Subregions: Sections and Subsections for the conterminous United States. *General Technical Report WO-76D*, Washington Office, USDA Forest Service. <https://doi.org/10.2737/WO-GTR-76D>

Forest Cover Types and Carbon

Figure 7. Total forest area (thousand ha) by forest type³ in Iowa.

Data: USDA Forest Service, 2024

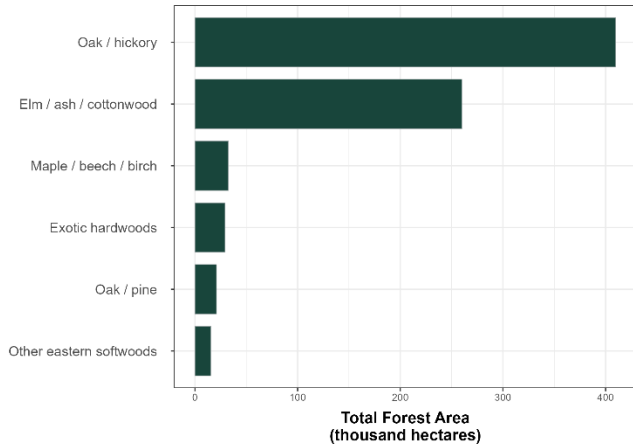
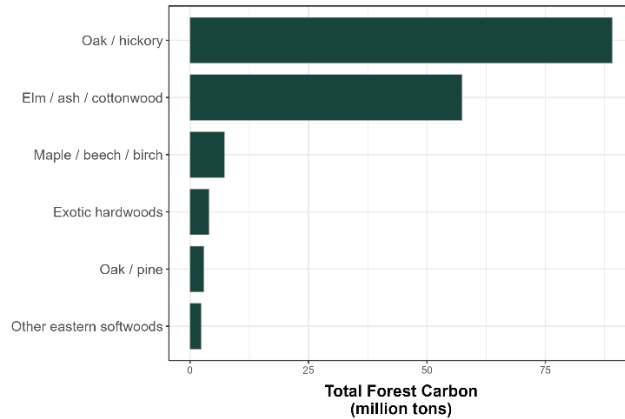


Figure 8. Total forest carbon (million tons) by forest type in Iowa. Total forest carbon is the sum of carbon stored across all aboveground and belowground pools (includes Soil Organic carbon + Live Belowground carbon + Live Aboveground carbon + Litter carbon + Dead wood carbon).

Data: USDA Forest Service, 2024

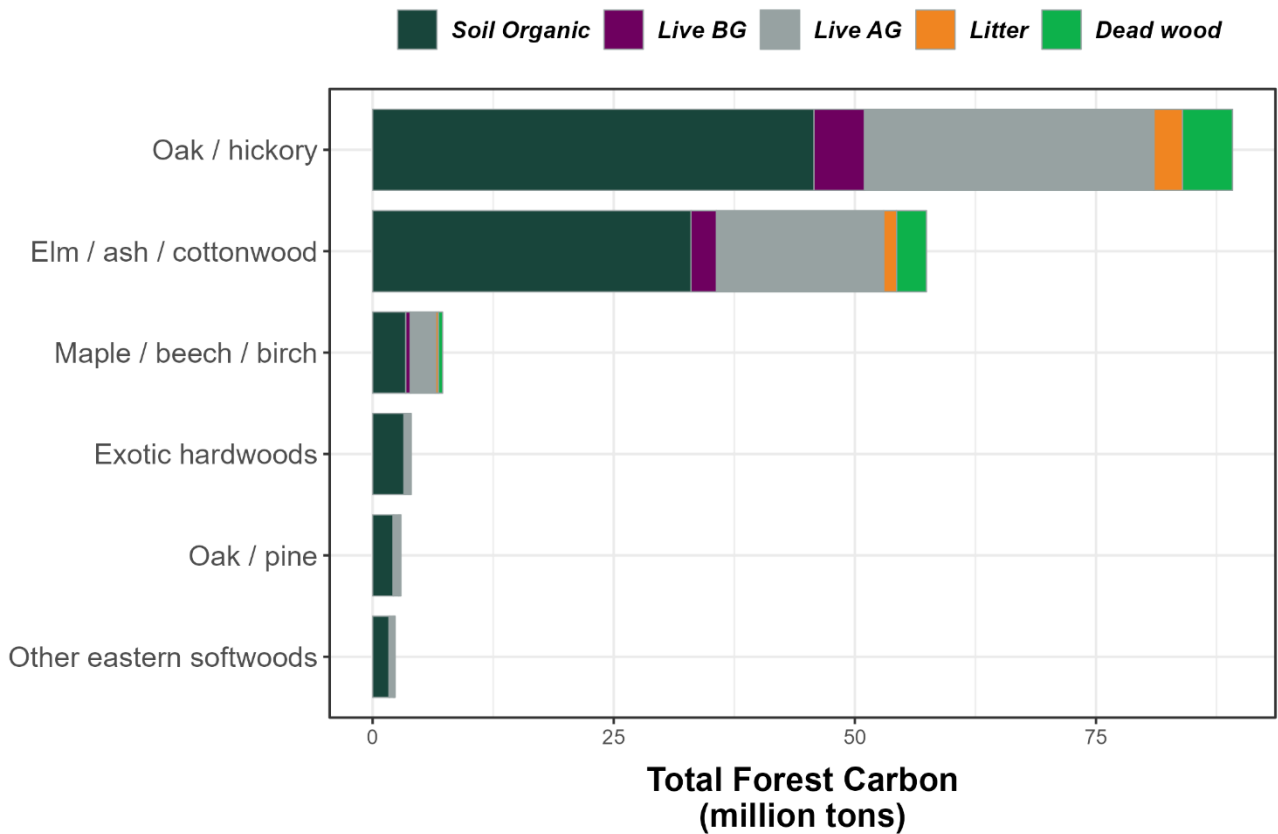


Iowa is dominated by 6 key forest cover types: Oak/hickory, Elm/ash/cottonwood, Maple/beech/birch, Exotic hardwoods, Oak/pine, and Other eastern softwoods. **Figure 7** and **Figure 8** show state-level data of total forested area and total forest carbon, respectively, for each of these cover type groups. As these figures show, Oak/hickory is the dominant forest type of Iowa, spanning an area upwards of 400,000 hectares and storing nearly 90 million tons of carbon statewide. With coverage levels ranging from <25,000-250,000 hectares, other forest types in this state are less abundant, yet play an important role contributing to enhanced biodiversity and landscape heterogeneity. Comparing trends from **Figure 7** and **Figure 8** demonstrates how carbon storage levels vary by forest cover type. For example, Maple/beech/birch and Exotic hardwoods have similar land area coverage in Iowa (**Figure 7**), yet when it comes to carbon, Maple/beech/birch stands store double the carbon of their Exotic hardwoods counterparts (**Figure 8**).

³Forest Types are a classification of forest land based upon and named for the tree species that forms the plurality of live-tree stocking. These forest types used in the briefing align with FIA's definition of Forest type group which are a combination of forest types that share closely associated species and site requirements. Longer definitions of both forest types and forest type groups are found in Appendix D of the Forest Inventory and Analysis Database: Database Description and User Guide for Phase 2 (version 9.1) which can be accessed here: https://research.fs.usda.gov/sites/default/files/2023-11/wo-fiadb_user_guide_p2_9-1_final.pdf

Forest Carbon Pools

Figure 9. Total forest carbon (million tons) by pool and forest type in Iowa.



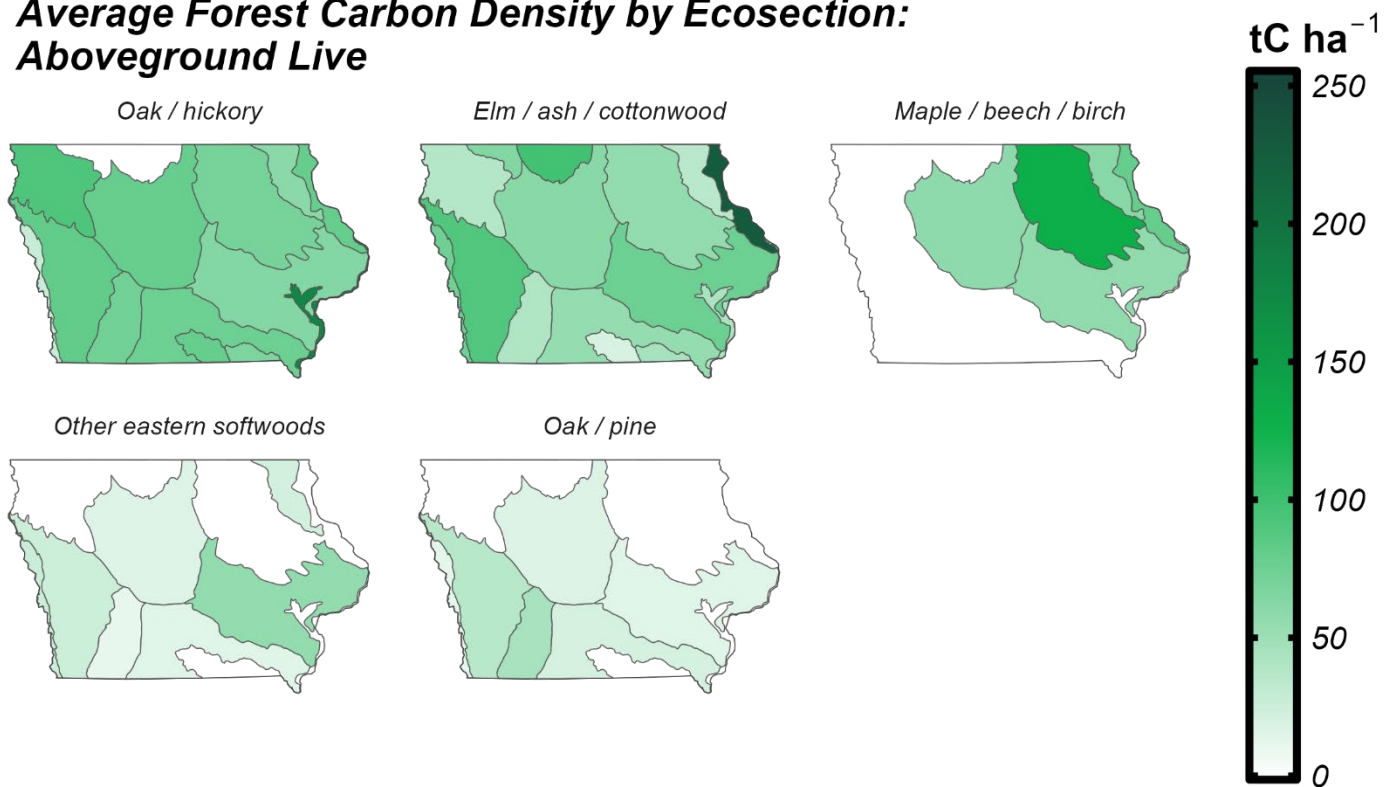
Data: USDA Forest Service, 2024

Forest carbon storage can be further assessed by examining how it's distributed across different ecosystem carbon pools. **Figure 9** shows the amount of carbon stored in different carbon pools of key forest cover types in Iowa. These values show how different forest types allocate distinct proportions of forest carbon into soil organic matter, live belowground (BG) biomass, live aboveground (AG) biomass, litter, and dead wood pools. For instance, forests composed of Oak/hickory, Elm/ash/cottonwood and Exotic hardwoods allocate more ecosystem carbon to belowground pools (soil organic matter + live BG biomass), whereas Maple/beech/birch forests tend to distribute stored carbon more evenly between aboveground and belowground pools. Another noteworthy trait shown in **Figure 9** is the magnitude of carbon storage levels across different pools and cover types. Oak/hickory's dominating presence on this landscape means its statewide carbon pools are outsized compared to other groups. For example, leaf litter and dead wood pools of Iowa's Oak/hickory forests on their own contain more stored carbon than the total ecosystem carbon (sum of carbon stored across all pools) contained by the Maple/beech/birch, Exotic hardwoods, Oak/pine, or Other eastern softwoods groups.

Forest Carbon Density

Figure 10. Aboveground live forest carbon density (tC ha⁻¹) by forest type in Iowa.

Average Forest Carbon Density by Ecoregion: Aboveground Live



Data: USDA Forest Service, 2024

Forest carbon density can be influenced by many ecosystem traits, such as tree density, stand age, species mix/cover type, soil fertility, elevation, and a site's management and disturbance history. In **Figure 10**, the carbon density of aboveground living forest biomass is shown for 5 key cover types in Iowa. Of these, Elm/ash/cottonwood stands hold the highest levels of aboveground live carbon per unit area, represented by the deep shade of green in the state's northeastern ecoregion. By contrast, Oak/hickory and Maple/beech/birch stands have a lower carbon density per unit area for this ecoregion. Across much of their extent, Oak/hickory stands exhibit relatively even carbon densities, while cover types like Elm/ash/cottonwood and Maple/beech/birch show higher levels of variability across ecoregions. In these instances, variable carbon densities can be driven by the relative prevalence or absence of each forest type from a given ecoregion.

Species-Specific Climate Considerations

Climate change is expected to impact the distribution of species into the future. The Climate Change Tree Atlas is a tool that lets you explore current tree species traits and suitable habitats in the Eastern U.S. and how they are likely to be affected by a changing climate. Researchers with the USDA Forest Service developed a set of models that form the basis of the Tree Atlas. The Tree Atlas brings together information about habitat suitability, migration potential, and tree species traits to understand current and potential distributions for 125 tree species (<https://doi.org/10.2737/Climate-Change-Tree-Atlas-v4>).

Core Climate Change Atlas Components:

- DISTRIB-II: Species habitat suitability model
- SHIFT: Migration model (when combined with DISTRIB-II, estimates colonization potential of future suitable habitats)
- Adaptability Ratings: Species adaptability ratings (species traits not included in DISTRIB-II and SHIFT models)

Summaries for tree species are available for a variety of geographies, in both PDF and Excel format.

Geographic Area	Description
National Forest Summaries	Results summarized for 55 national forests
National Park Summaries	Results summarized for 78 national parks
HUC6 Watershed	Results summarized by hydrologic unit codes level 3 (HUC 6) which are hierarchical classifications based on surface hydrologic features in which level 3 maps watershed basins (Seaber et al, 1987) https://pubs.usgs.gov/wsp/wsp2294/
Ecoregional Vulnerability Assessments (EVAS)	Results summarized by ecoregions used in the Ecoregional Vulnerability Assessments https://www.climatehubs.usda.gov/assessments
USDA Forest Service EcoMap 2007 Sections	Results summarized by ecological sections that delineate ecosystems with distinctive vegetation and other unique ecological characteristics (Cleland et al, 2007, McNab et al, 2007)
National Climate Assessment (NCA) 2015 Regional Summaries	Results summarized by National Climate Assessment Region which include the Midwest, Northeast, Northern Plains, Southeast, and Southern Plains
1 x 1° Grid Summaries	Results summarized by 1x1° latitude and longitude
State Summaries	Results summarized for 38 states
Urban areas	Results summarized for 185 urban areas across the eastern US

Additional background on this tool can be found at: <https://doi.org/10.2737/Climate-Change-Tree-Atlas-v4> along with short video tutorials on the Climate Change Atlas website.

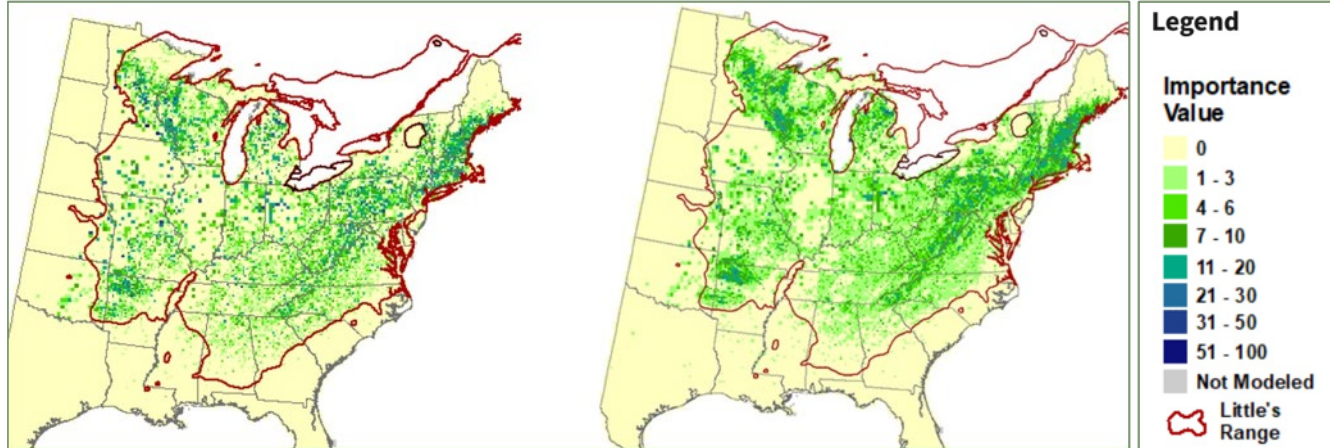
Habitat Suitability and Migration Models

The Tree Atlas brings together information about habitat suitability, migration potential, and tree species traits to understand current and potential distributions for 126 tree species. The following maps and figures are examples of Tree Atlas model results for one species of importance in this state: northern red oak (*Quercus rubra*). We highly encourage reading the interpretive narrations and tutorials on the Tree Atlas website: <https://doi.org/10.2737/Climate-Change-Tree-Atlas-v4>.

Key Species Example: Northern Red Oak (Model Reliability: Medium)

Current Forest Inventory and Analysis

Current Modeled Habitat (1981 to 2010)

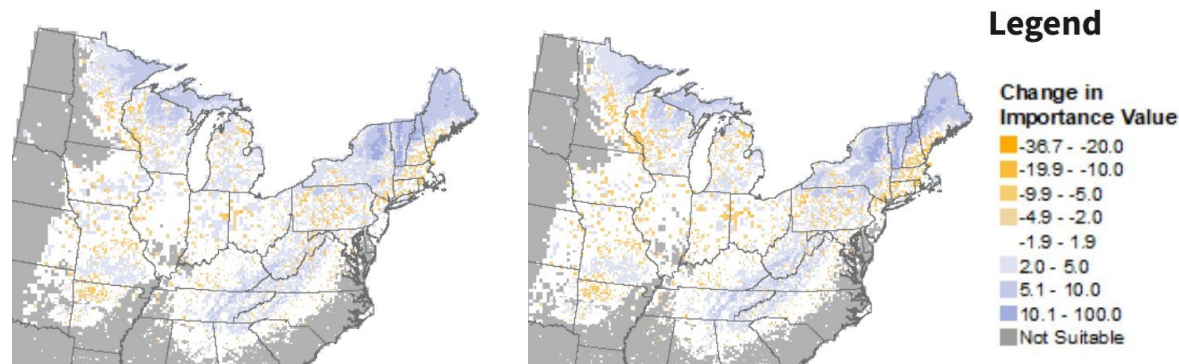


Summary of Change Maps for Northern Red Oak

Maps depicting changes in habitat quality (represented as Importance Values) and the difference between the modeled habitats for an average of three general circulation models under two representative concentration pathways (RCP 4.5 and 8.5) for the period 2070 to 2099.

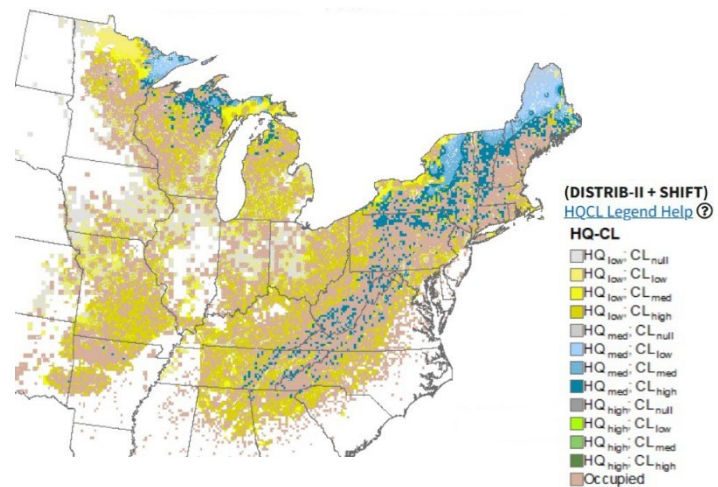
Moderate Emissions (RCP 4.5)

High Emissions (RCP 8.5)



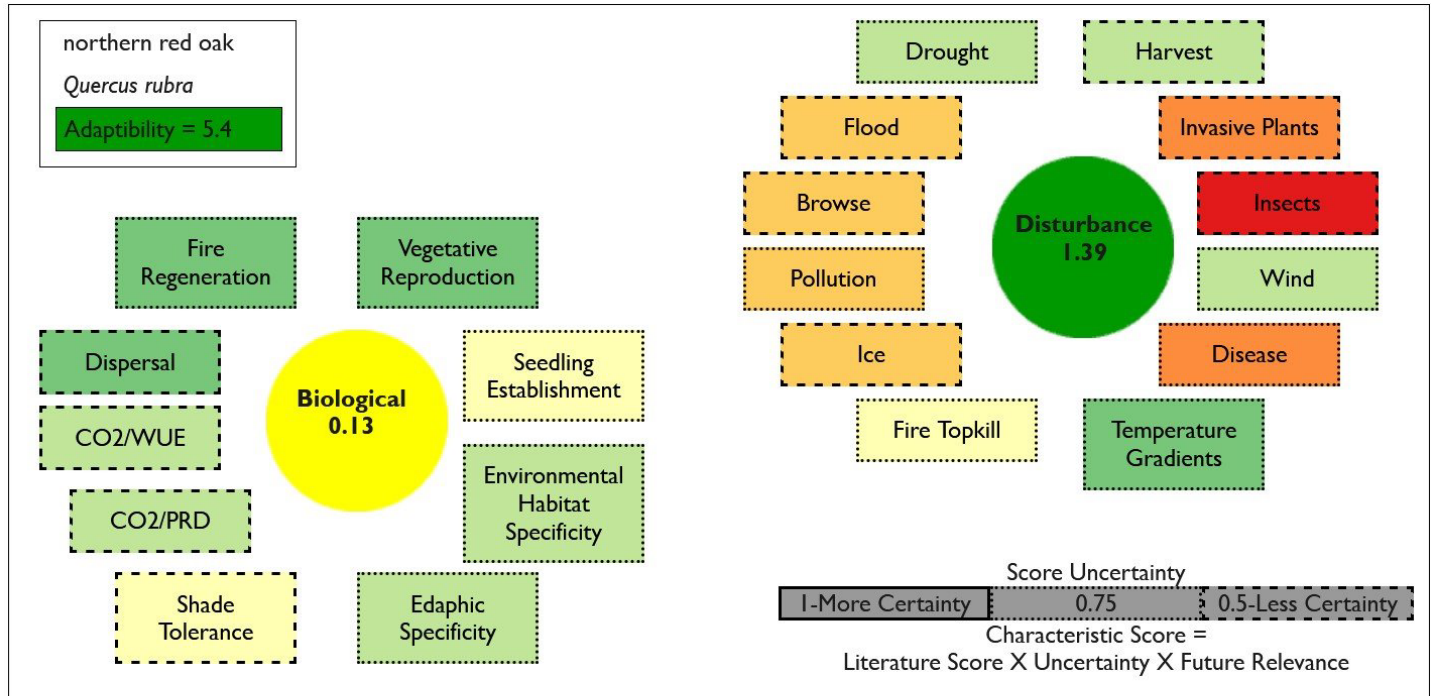
Migration Potential

The SHIFT model estimates the likelihood of colonization, for each 1x1 km cell, for suitable habitats designated by DISTRIB-II, over an approximately 100-year period consisting of multiple generations, depending on the tree species. Merging SHIFT outcomes with DISTRIB-II outcomes provides the power to evaluate the potential for the species to migrate naturally into the new habitat projected by the DISTRIB-II model. For many species, habitat may expand greatly (especially under high emissions), but there is virtually no chance for much of that area to get colonized naturally. The area most desirable for managed relocation will be the darkest shade of green: habitat quality (HQ) is high and colonization likelihood (CL) is high.



Adaptability Ratings

Key Species Example: Red Oak (*Quercus rubra*)



V Hi Pos +3	High Pos +2	Low Pos +1	Minimal 0	Low Neg -1	High Neg -2	V Hi Neg -3
----------------	----------------	---------------	--------------	---------------	----------------	----------------

The Adaptability score, which assesses 21 variables to assign adaptability ratings to tree species in the eastern US, reflects a species' potential adaptability to climate change-driven stressors and disturbances at range wide scale. Adaptability ratings provide broad insights into factors that cannot be directly included in the Climate Change Tree Atlas species migration models. Two types of species traits are evaluated: 1) biological and 2) disturbance, each with their own set of factors to help characterize species' traits and responses to disturbance. Uncertainty is also included for each trait or factor assessed. When coupled with other modeled projections, adaptability ratings can support future planning under a changing climate.

The Adaptability variable is a single score derived from the Modification Factors which encompass scores for the 12 disturbance and 9 biological factors. The Adaptability results can be considered relative to other tree species. For example, a species with a low Adaptability variable likely does not have life history characteristics to allow it to thrive under most conditions whereas a high Adaptability variable will likely do better under the climate change outputs from the DISTRIB-II and SHIFT Models.

Climate Change Atlas Summary for Red Oak

Northern red oak is a widely distributed species (24.4% of area, more than any other oak except white oak and sixth overall), dense, high IV, and abundant throughout most of the northern 2/3 of the eastern US. Its medium reliable model predicts a small increase in habitat all the way to the northern border of the country. The SHIFT model allows some potential for natural migration into those new habitats within 100 years. It is rated as highly adaptable to a changing climate and thus its overall capability is very good.

Citations:

Data Sources:

Iverson, L.R., Prasad, A.M., Peters, M.P., Mathews, S.N. (2019). Facilitating Adaptive Forest Management under Climate Change: A Spatially Specific Synthesis of 125 Species for Habitat Changes and Assisted Migration over the Eastern United States. *Forests*, 10(11): 989. <https://doi.org/10.3390/f10110989>

PRISM Climate Group, Oregon State University, <https://prism.oregonstate.edu>, data created 4 Feb 2014, accessed April 15, 2024.

Sexton, J.O, Song, X-P., Feng, M., Nooipady, P., Anand, A., Huang, C., Kim, D-H., Collins K.M., Channan S., DiMiceli C., Townshend J.R. (2013). Global, 30-m resolution continuous fields of tree cover: Landsat-based rescaling of MODIS vegetation continuous fields with lidar-based estimates of error. *International Journal of Digital Earth*, 6(5). <https://doi.org/10.1080/17538947.2013.786146>

USDA Forest Service. (2024). *Forest inventory and analysis program*. Available at: <https://www.fia.fs.usda.gov/>

Habitat suitability models on trees:

Peters et al. (2020). Climate change tree atlas, Version 4. U.S. Forest Service, Northern Research Station and Northern Institute of Applied Climate Science, Delaware, OH. <https://doi.org/10.2737/Climate-Change-Tree-Atlas-v4>

Iverson, L.R, Peters, M.P., Prasad, A.M., & Matthews, S.N. (2019). Analysis of Climate Change Impacts on Tree Species of the Eastern US: Results of DISTRIB-II Modeling. *Forests*, 10(4), 302. doi: 10.3390/f10040302 <https://research.fs.usda.gov/treesearch/57857>

Peters, M. P., Iverson, L. R., Prasad, A. M., & Matthews, S. N. (2019). Utilizing the density of inventory samples to define a hybrid lattice for species distribution models: DISTRIB-II for 135 eastern U.S. trees. *Ecology and Evolution*. doi: 10.1002/ece3.5445 <https://research.fs.usda.gov/treesearch/58353>

Iverson, L. R., Prasad, A. M., Peters, M. P., & Matthews, S. N. (2019). Facilitating Adaptive Forest Management under Climate Change: A Spatially Specific Synthesis of 125 Species for Habitat Changes and Assisted Migration over the Eastern United States. *Forests*, 10(11), 989. doi: 10.3390/f10110989 <https://research.fs.usda.gov/treesearch/59105>

Prasad, A. M., Iverson, L. R., Matthews, S. N., & Peters, M. P. (2016). A multistage decision support framework to guide tree species management under climate change via habitat suitability and colonization models, and a knowledge-based scoring system. *Landscape Ecology*, 31(9), 2187–2204. doi: 10.1007/s10980-016-0369-7 <https://research.fs.usda.gov/treesearch/50748>

Prasad, A. M., Gardiner, J. D., Iverson, L. R., Matthews, S. N., & Peters, M. (2013). Exploring tree species colonization potentials using a spatially explicit simulation model: implications for four oaks under climate change. *Global Change Biology*, 19(7), 2196–2208. doi: 10.1111/gcb.12204 <https://research.fs.usda.gov/treesearch/43705>

Iverson, L. R., A. M. Prasad, S. N. Matthews, and M. Peters. 2008. Estimating potential habitat for 134 eastern US tree species under six climate scenarios. *Forest Ecology and Management* 254:390-406. <https://research.fs.usda.gov/treesearch/13412>

Adaptability of tree species:

Iverson, L. R., S. N. Matthews, A. M. Prasad, M. P. Peters, et al. (2012). Development of risk matrices for evaluating climatic change responses of forested habitats. *Climatic Change* 114(2): 231-243. doi: 10.1007/s10584-012-0412-x. <https://research.fs.usda.gov/treesearch/41221>

Matthews, S. N., L. R. Iverson, A. M. Prasad, M. P. Peters, and P. G. Rodewald. 2011. Modifying climate change habitat models using tree species-specific assessments of model uncertainty and life history factors. *Forest Ecology and Management* 262:1460-1472. <https://research.fs.usda.gov/treesearch/38643>

Climate summary definitions:

McNab, W.H.; Cleland, D.T.; Freeouf, J.A.; Keys, Jr., J.E.; Nowacki, G.J.; Carpenter, C.A., comps. 2007. Description of ecological subregions: sections of the conterminous United States [CD-ROM]. Gen. Tech. Report WO-76B. Washington, DC: U.S. Department of Agriculture, Forest Service. 80 p. <https://research.fs.usda.gov/treesearch/48669>

Cleland, D.T.; Freeouf, J.A.; Keys, J.E.; Nowacki, G.J.; Carpenter, C.A.; and McNab, W.H. 2007. Ecological Subregions: Sections and Subsections for the conterminous United States. Gen. Tech. Report WO-76D [Map on CD-ROM] (A.M. Sloan, cartographer). Washington, DC: U.S. Department of Agriculture, Forest Service, presentation scale 1:3,500,000; colored. <https://research.fs.usda.gov/treesearch/48672>

Seaber, Paul R., F. Paul Kapanos, and George L. Knapp (1987). Hydrologic Unit Maps. United States Geological Survey Water-Supply Paper 2294: i–iii, 1–63.